

Display Report

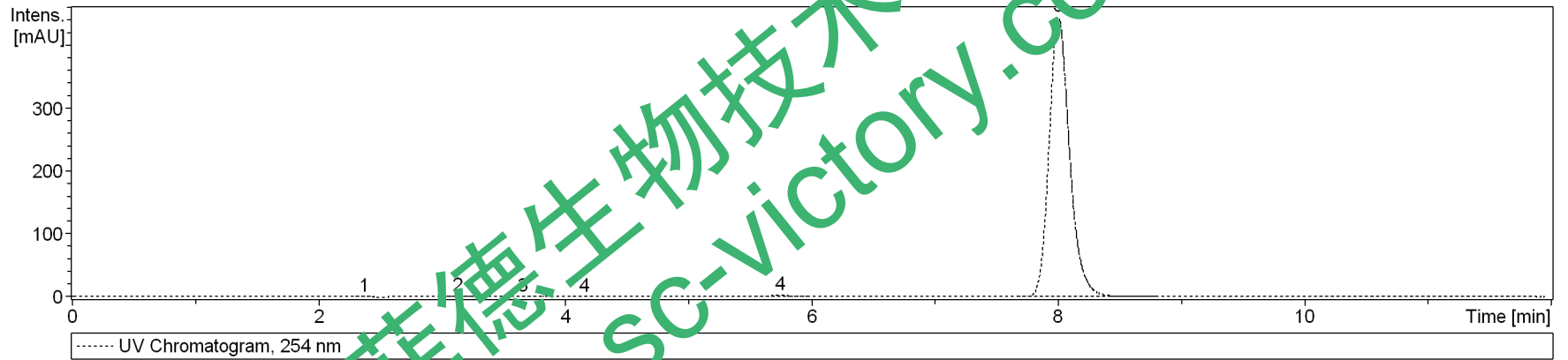
Analysis Info

Analysis Name D:\Data\test\0603\houpufen_55_01_1493.d
Method 1493.m
Sample Name houpufen
Comment

Operator bruker
Instrument amaZon SL

Acquisition Parameter

Ion Source Type	ESI	Ion Polarity	Positive	Alternating Ion Polarity	on
Mass Range Mode	UltraScan	Scan Begin	70 m/z	Scan End	1000 m/z
Capillary Exit	140.0 V	n/a	n/a	Trap Drive	50.6
Accumulation Time	1250 μ s	Averages	5 Spectra	Auto MS/MS	off



#	RT [min]	Area	Area Frac	%
1	2.4	3.6400	0.1	
2	3.1	5.1417	0.1	
3	3.7	6.372	0.1	
4	5.7	27.795	0.5	
5	8.0	145.0251	99.2	

Display Report

Analysis Info

Analysis Name D:\Data\test\0603\houpufen_55_01_1493.d
Method 1493.m
Sample Name houpufen
Comment

Operator blanker
Instrument amaZon SL

Acquisition Parameter

Ion Source Type	ESI	Ion Polarity	Positive	Alternating Ion Polarity	on
Mass Range Mode	UltraScan	Scan Begin	70 m/z	Scan End	1000 m/z
Capillary Exit	140.0 V	n/a	n/a	Trap Drive	50.6
Accumulation Time	1250 μ s	Averages	5 Spectra	Auto MS/MS	off

